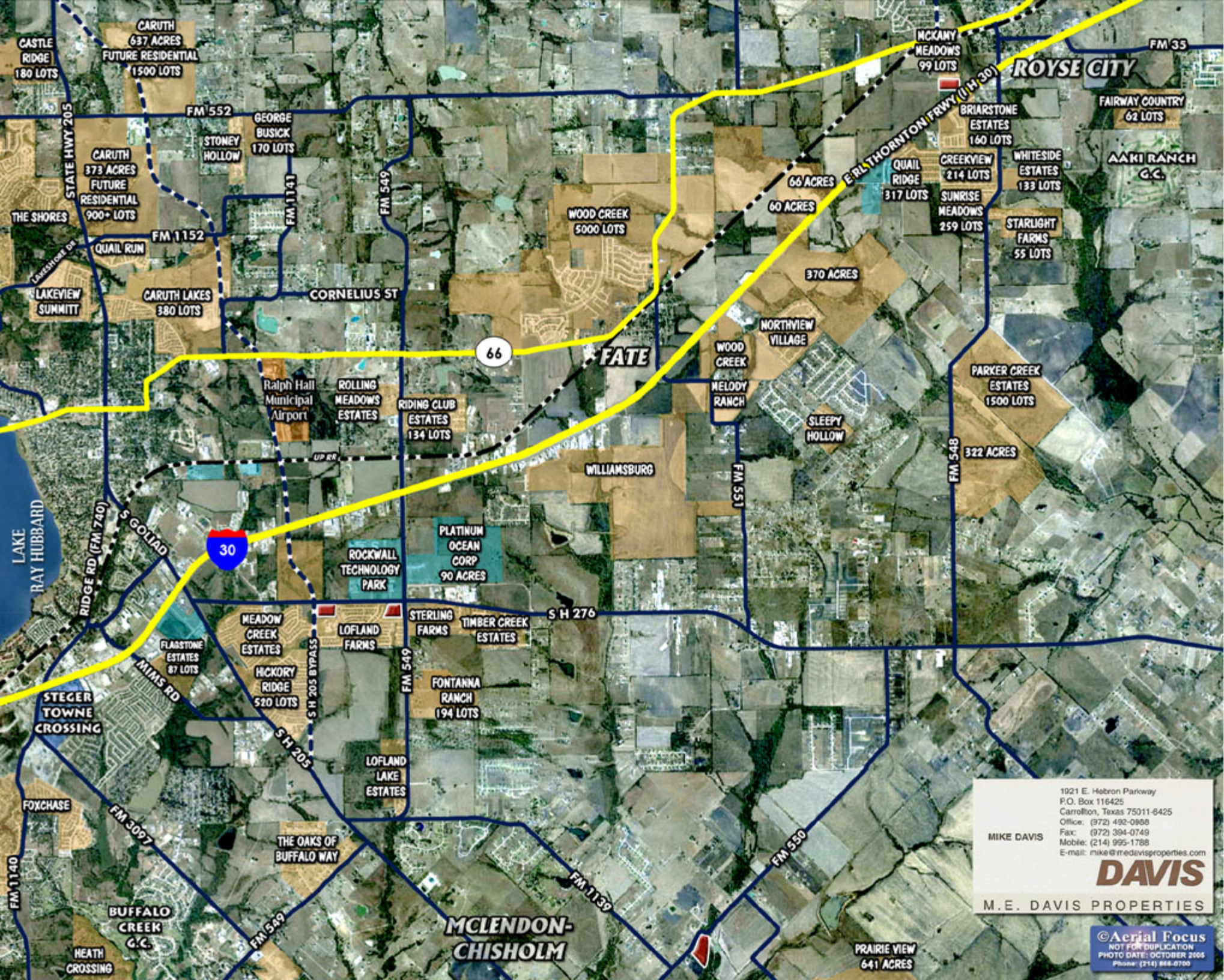


LOFLAND FARMS**RETAIL SITES****PROPERTY INFORMATION**

LOCATION:	SWC of S.H. 276 & F.M. 549 SEC of S.H. 276 & Proposed S.H. 205 By-Pass Rockwall, Rockwall County, Texas.
SIZE:	13.5 +/- Acres (27 acres total)
SHAPE:	Rectangular
TOPOGRAPHY:	Flat
ZONING:	Retail
UTILITIES:	Available to the property
PRICE:	\$4.00 per square foot



ROYSE CITY

FATE

MCLENDON-CHISHOLM

1921 E. Hebron Parkway
 P.O. Box 116425
 Carrollton, Texas 75011-6425
 Office: (972) 492-0888
 Fax: (972) 394-0749
 Mobile: (214) 995-1788
 E-mail: mike@medavisproperties.com

MIKE DAVIS

DAVIS

M.E. DAVIS PROPERTIES

©Aerial Focus
 NOT FOR DUPLICATION
 PHOTO DATE: OCTOBER 2005
 Phone: (214) 868-0700

1921 E. Hebron Parkway
P.O. Box 116425
Carrollton, Texas 75011-6425
Office: (972) 492-0988
Fax: (972) 394-0749
Mobile: (214) 995-1788
E-mail: mike@medavisproperties.com

MIKE DAVIS

DAVIS

M.E. DAVIS PROPERTIES



INTERSTATE 30

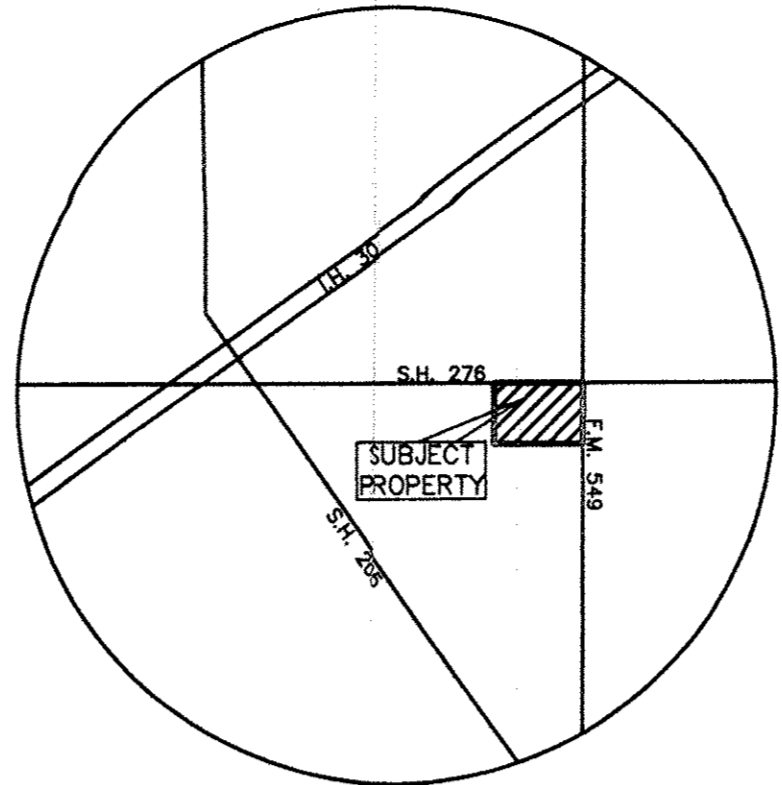
STATE HWY 205 BYPASS

FM 549

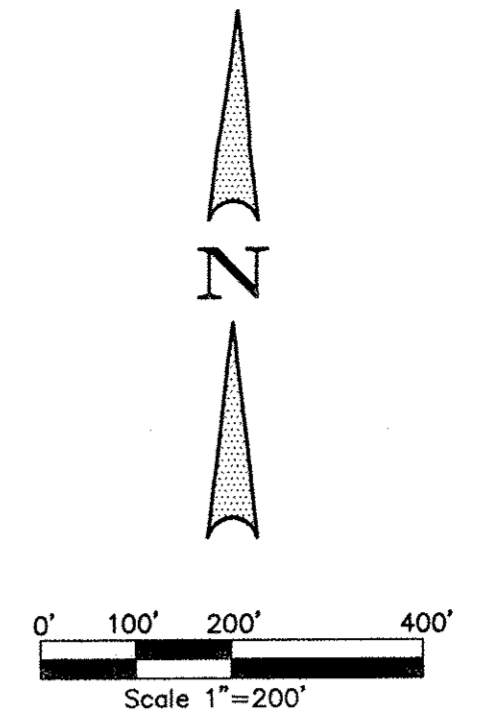
ROCKWALL

STATE HWY 276

STATE HWY 205



LOCATION MAP
MAPSCO PAGE 30-D



Winkelmann & Associates, Inc.
CONSULTING CIVIL ENGINEERS & SURVEYORS
1820 BELCREST ROAD, SUITE 200
DALLAS, TEXAS 75236
(972) 482-7080
(972) 482-7086 FAX

REVISION	DATE	APPROV.

S.H. 276
(120' ROW)
EXISTING 44' ASPHALT ROAD
FUTURE 4-LANE DIVIDED HWY

10' SCREENING EASEMENT

FUTURE MEDIAN OPENING

T.H.D. CHANNEL ESMT.
VOL. 46, PG. 197

N 7019036.9964
E 2607228.0833

F.M. 549
(80' ROW)
EXISTING 26' ASPHALT ROAD
FUTURE 6-LANE HWY (P&D)

EXIST' 100'
FUTURE 120'

N 7018982.6874
E 2603384.2811

FUTURE 205 BYPASS
(110' ROW)
FUTURE 6-LANE HWY (P&D)

5' SCREENING EASEMENT

N 7017032.3055
E 2603418.2411

10' FARMERS ELEC. CO.-OP ESMT.
VOL. 216, PG. 178
CITY OF ROCKWALL CITY LIMITS

12.621 ACRES GROSS
11.836 ACRES NET
RETAIL LOT 1
BLOCK P

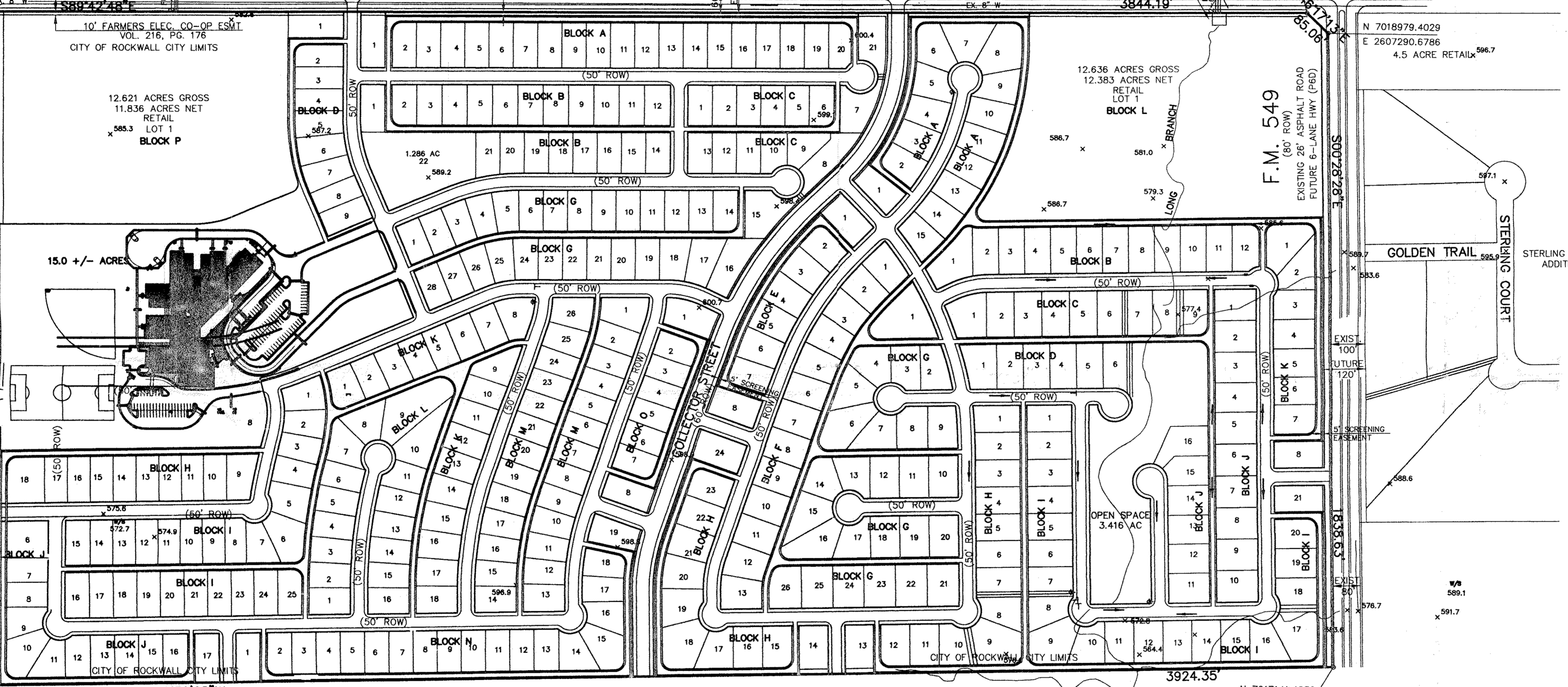
15.0 +/- ACRES

12.636 ACRES GROSS
12.383 ACRES NET
RETAIL LOT 1
BLOCK L

N 7018979.4029
E 2607290.6786
4.5 ACRE RETAIL

99.506 ACRES
WILLIAM L. LOFLAND TO
CHARLES L. WILSON, TRUSTEE
VOL. 96, PG. 564
JUNE 30, 1971

APPROX. LOCATION OF
100-YEAR FLOODPLAIN
ZONE-A



CITY OF ROCKWALL CITY LIMITS

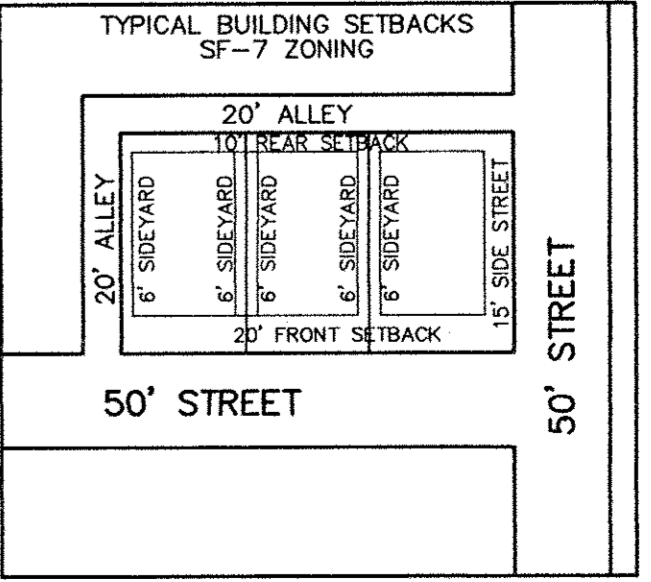
PART OF 582.99 ACRES
N.L. LOFLAND
VOL. 38, PG. 540

N 7017141.4636
E 2607341.0727

W.H. BAIRD SURVEY, ABSTRACT NO. 25
CITY OF ROCKWALL
ROCKWALL COUNTY, TEXAS

DAVIS DEVELOPMENT
P.O. BOX 116425
CARROLLTON, TEXAS 75011-6452

PRELIMINARY PLAT
LOFLAND FARMS
438 RESIDENTIAL LOTS - 172.854 AC.
ROCKWALL, TEXAS



Scale: 1"=200' Date: 4-20-98
Designed By: WBA
Drawn By: MK
Checked By: FEM
File: 00950PPT.DWG
Project No.: 00950.03

SHEET
1
OF
1